

Deep C ROV Trencher

Maximum Efficiency with Minimal Footprint

The Deep C ROV Trencher is a highly cost-efficient solution for trenching of control umbilicals, fibre optic and inter-array cables up to 150mm OD and down to 2000m water depth.

Skidded to any WROV and neutrally boyant, the trenching system requires only hydraulic supply from the ROV to operate. Two swords with jetting nozzles are lowered on each side of the cable, flushing the product down to 1,7m soil depth at up to 250 m/hour.

The Deep C[®] ROV Trencher requires no deck space or manning and features an adjustable ROV interface to fit various types of ROVs.

To ensure an efficient and predictable trenching operation, Deep C offers PhD-level engineering within sediment dynamics to optimize equipment configuration.

Features

- Trenches up to 250 m/hr and down to 1,7m below seabed
- ROV-powered, no need for topside equipment
- Low environmental impact



Technical Specifications

The Deep C ROV Trenching Skid is a compact skid for trenching up to 2000m depth, delivering up to 3000 lpm via ROV-powered hydraulics. It features an integrated jetting system and optimized hose interfaces for efficient operation.

Contact mail@deepcgroup.com for more details.

Dimensions

LxWxH:	4650x18106x566 mm
Dry weight:	850 kg
Weight submerged:	40-70 kg
Max water depth:	2 000m

Performance

Single pump mode:	1 500 lpm
Dual pump mode:	3 000 lpm
Required flow at 180 bar:	60 lpm

Pump Interface

Pressure:	3m ¾" hose, JIC 12F
Return:	3m ¾" hose, JIC 12F
Drain:	3m ½" hose, JIC 8F
Cylinder interface:	2× 3m ¼" hose, JIC 6F



Deep C ROV Trencher Supplementary Tools

Customizable tools to enhance efficiency and versatility.

ROV Grouting Breaker Kit

LxWxH:	285 x 175 x 210 mm
Dry weight:	22 kg
Weight submerged:	20 kg
Power requirements:	85 L/min 160<210 bar
Water flow:	30L/min
Water pressure:	520 bar



ROV Dredge 6"

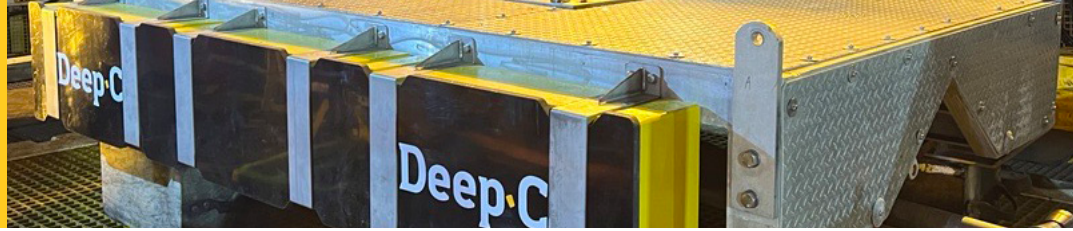
Unrestricted ID:	150 mm
Hydraulic requirement:	60 lpm @ 180 bar
Flow rate water:	5 800 lpm
Theoretical removal rate:	60 t/hr
Dry weight:	60 kg
Weight submerged:	40 kg



Remote Support Unit (RSU)

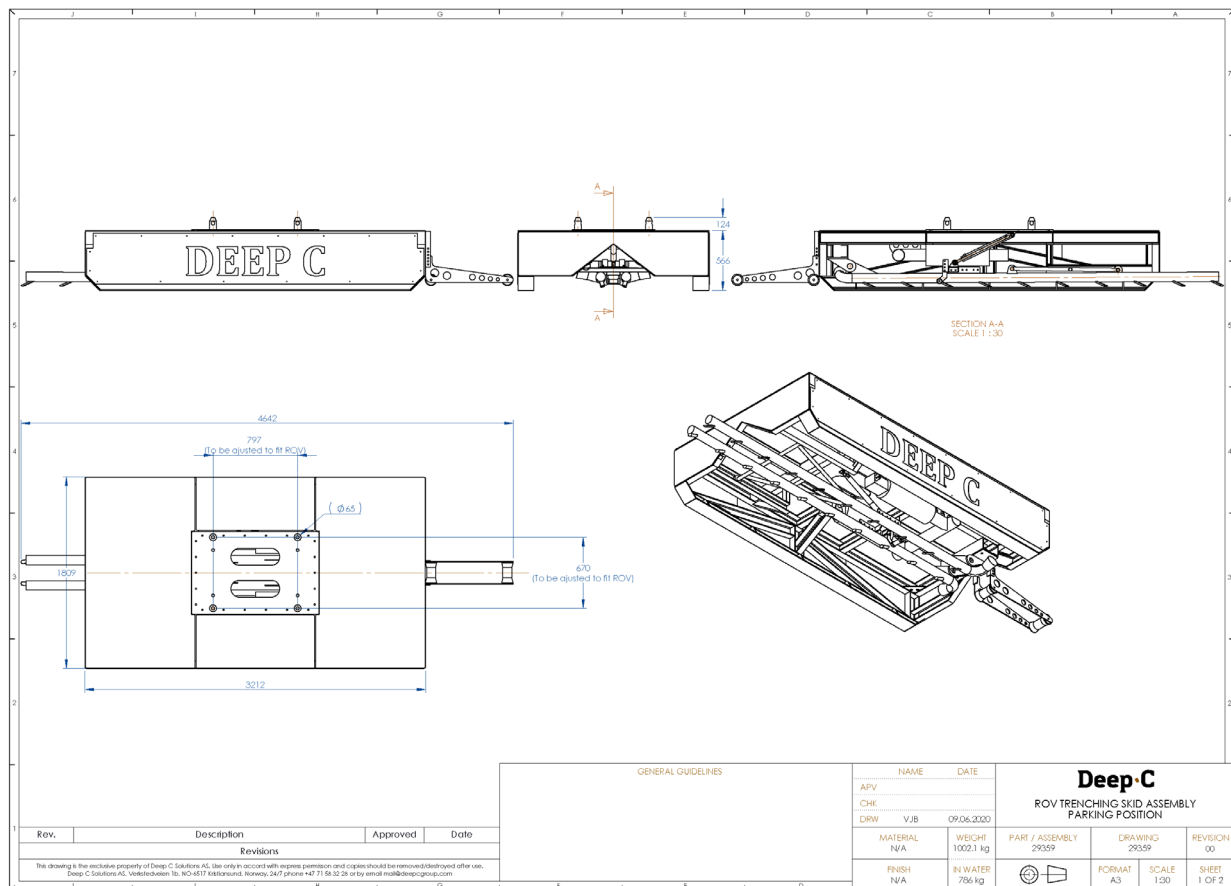
Screen resolution:	HD (1280x720)
Field of view:	24°
Connection:	WiFi or 4G/5G Broadband
Camera:	48MP
Functions:	Hands-free and MS Teams

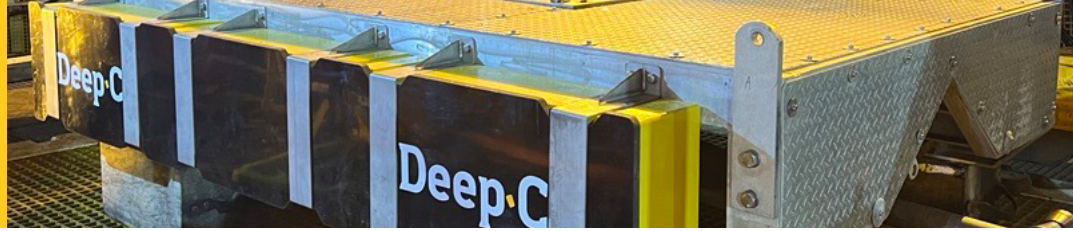




Technical Drawings

General arrangement





Technical Drawings

General arrangement

