



## Deep C Boulder Grab

### Subsea Grab for Boulder & Sediment Removal

The Deep C Boulder Grab is a hydraulically operated subsea poly grab designed for efficient handling of large boulders, sediments, and debris.

Lowered to the seafloor using a vessel's crane, it can be powered from the surface or via ROV hot-stabbing, making it highly versatile for deep-sea operations.

#### Features

- Available in 0.5 m<sup>3</sup>, 2.3 m<sup>3</sup>, and 4 m<sup>3</sup> configurations
- Operates via HPU or ROV hot-stabbing
- Up to 10.8 ton lifting capacity



## Technical Specifications

The Deep C Boulder Grab is a high-capacity subsea grab for boulder and sediment removal, available in 0.5 m<sup>3</sup>, 2.3 m<sup>3</sup>, and 4.0 m<sup>3</sup>. It operates at up to 300 bar with 80-190 lpm hydraulic flow, supporting ROV and vessel crane deployment.

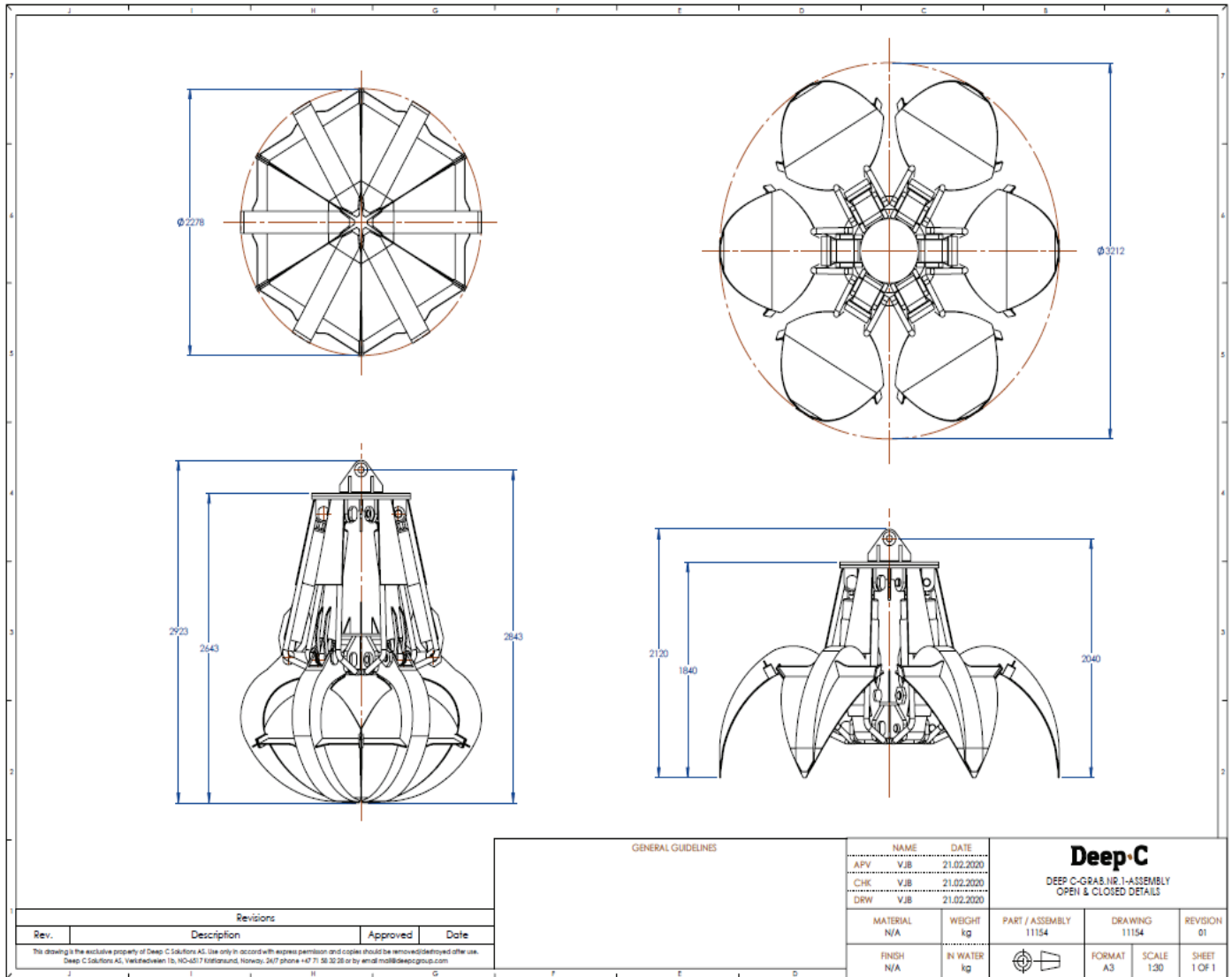
Contact [mail@deepcgroup.com](mailto:mail@deepcgroup.com) for more details.

Dimension and interface	0.5 m <sup>3</sup>	2.3 m <sup>3</sup>	4.0 m <sup>3</sup>
Dimensions (closed):	1210 x 1210 x 1690 mm	2278 x 2278 x 2923 mm	2740 x 2740 x 3664 mm
Dimensions (open):	2000 x 2000 x 1500 mm	3212 x 3212 x 2120 mm	3832 x 3832 x 3165 mm
Weight in air:	1100 kg	4500 kg	9200 kg
Capacity:	0.5 m <sup>3</sup>	2.3 m <sup>3</sup>	4.0 m <sup>3</sup>
Working load limit:	5000 kg	15,000 kg	20,000 kg
Working pressure:	300 bar	250 bar	300 bar
Max oil flow:	160 lpm	190 lpm	190 lpm
Oil used:	Shell Tellus 32	Shell Tellus 32	Shell Tellus 32
Hydraulic interface:	2 x 8 m JIC 8	2x 8m JIC 8	2x 8m ½" JIC 8



## Technical Drawings

Configurations Overview of Deep C 2.3 m3 Boulder Grab





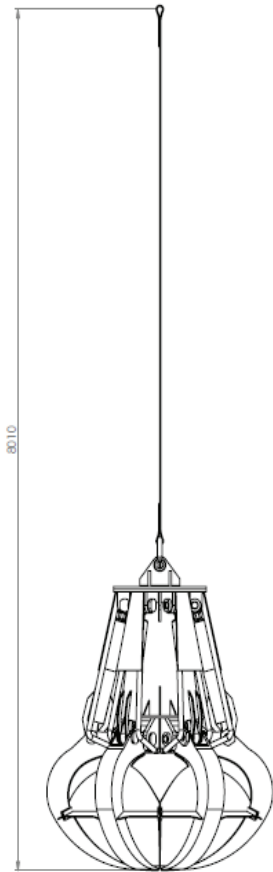
# Technical Drawings

Configurations Overview of Deep C 2.3 m3 Boulder Grab

## Rigging Arrangement

Deep C Boulder Grab, BG - 01

1. 1 Part Double Duplex Flat Woven Webbing Sling acc. DNV 2.7 - 1  
 Material: 100% Polyester  
 Color: Orange  
 Length: 5 meters  
 WLL: 20 Tons  
 Manufacturer: AS Hamatec  
 Serial Number: 019240
2. 1 Part Safety Pin Bow Shackle Offshore acc. DNV 2.7-1  
 WLL: 35 Tons  
 Manufacturer: Gunnebo  
 Serial number: AJ8/AY;
3. 1 Top Mounted Lifting Point in Accordance with DNV 2.22  
 WLL: 15 Tons Boulder Grab  
 Serial number: SLT14021 ;



DEEP C GROUP SPECIFIC		DATE	DATE	DATE	DATE	DATE	DATE	DATE	DATE
DRAWING APPROVALS		DATE	DATE	DATE	DATE	DATE	DATE	DATE	DATE
DESIGNER		DATE	DATE	DATE	DATE	DATE	DATE	DATE	DATE
CHECKER		DATE	DATE	DATE	DATE	DATE	DATE	DATE	DATE
APPROVER		DATE	DATE	DATE	DATE	DATE	DATE	DATE	DATE
MATERIAL		DATE	DATE	DATE	DATE	DATE	DATE	DATE	DATE
DRAWING NO.		DATE	DATE	DATE	DATE	DATE	DATE	DATE	DATE
SCALE		DATE	DATE	DATE	DATE	DATE	DATE	DATE	DATE
SHEET NO.		DATE	DATE	DATE	DATE	DATE	DATE	DATE	DATE
SHEET TOTAL		DATE	DATE	DATE	DATE	DATE	DATE	DATE	DATE

