



Deep C Heavy Duty Subsea Dredge

Give Your ROV Dredging Superpower

The Deep C HD Subsea Dredge is a compact and standalone dredging unit designed for ROV or diver operation, offering exceptional versatility and efficiency.

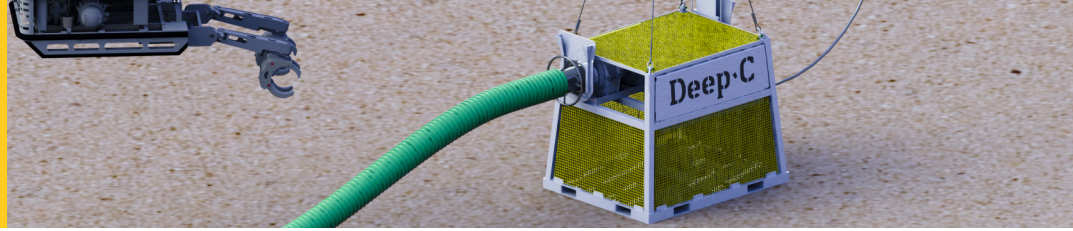
With a powerful 16" unrestricted flow and up to 2x95 kW available power, it ensures high-capacity sediment removal and long transport distances.

Its innovative design allows the operation of two dredgers simultaneously from a single unit, eliminating the need for additional topside equipment.

For cohesive and hard seabed conditions, the HD Subsea Dredge can be outfitted with a soil specific jetting arrangement.

Features

- 190 kW dredging power
- Only 5 kPa ground pressure
- Up to 16" unrestricted dredging



Technical Specifications

Subsea Dredge is a high-performance unit designed for operations up to 2000m depth, supporting a dredge size of up to 16 inches. With optional features such as an ROV Dredging Manipulator and water jetting capabilities, it delivers precise and efficient excavation.

Contact mail@deepcgroup.com for more details.

Dimensions

LxWxH:	2865x2160x2196 mm
Dry weight:	3250 kg
Weight submerged:	2480 kg

Power & Navigation

Power on dredge:	Up to 2x95 kW
Power supply:	3 off: 440V, 60Hz, 250A, 3-phase
Source:	Deep C PDU

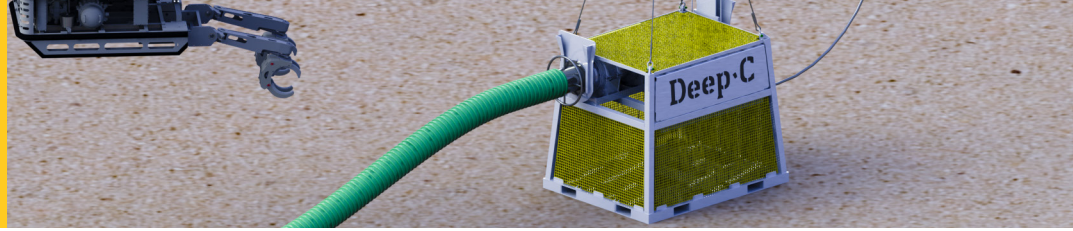
Performance

Dredge size:	Up to 16"
Ground pressure:	5 kPa
Flow rate:	Depends on ROV config.
Water depth:	2000m
Rock removal rates:	15 m ³ /hour**
Sand removal rates:	80 m ³ /hour**

Features (Optional)

Exhaust hose:	5m standard (extendable)
Dual dredgers & manipulator:	Optional
Std. suction hose length:	20m (longer available)

*) Estimated rates only, performance achieved under normal operational conditions. Exact rates dependent on soil conditions'. **) Initial rates using ROV hydraulics, second estimated rates using topside HPU.



Deep C HD Subsea Dredge Supplementary Tools

Customizable tools to enhance efficiency and versatility.

Optional Configurations

WORKING CONDITIONS	MITIGATION ACCESSORIES
ROV SIMOPS Dredging:	Dual hose configuration
For limited access:	Pile suction head
Cohesive & hard soil condition:	Low & medium pressure jetting



HD ROV Dredge Manipulator

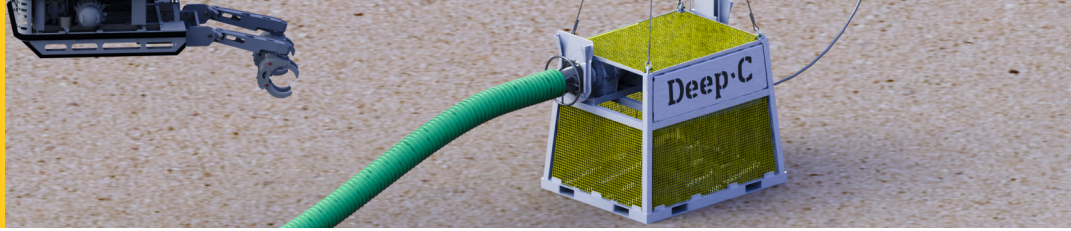
LxWxH:	1314 x 921 x 1325 mm
Dry weight:	120 kg
Weight submerged:	95 kg
Capacity:	175 liters
Work pressure:	180-250 bar



ROV Dredge 6"

Unrestricted ID:	150 mm
Hydraulic requirement:	60 lpm @ 180 bar
Flow rate water:	5 800 lpm
Theoretical removal rate:	60 t/hr
Dry weight:	60 kg
Weight submerged:	40 kg





Deep C HD Subsea Dredge Supplementary Tools

Customizable tools to enhance efficiency and versatility.

Boulder Grabs

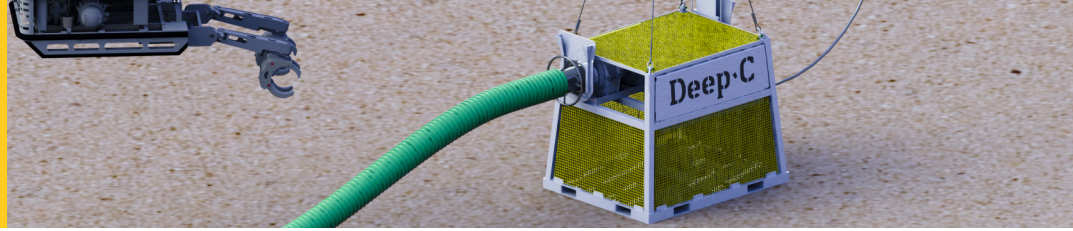
Dimension:	Depends on configuration
Configurations available:	0.5 m ³ , 2.3 m ³ & 4 m ³
Weight:	1 100 - 9 200 kg
Working pressure:	250 bar - 300 bar
Working load limit:	5 000 - 20 000 kg
Maximum oil pressure:	160 lpm - 190 lpm



Subsea HP Jetting System

LxWxH:	2 700 x 2 100 x 2 600 mm
Flow:	168 lpm @ 970 bar
Power rating:	300 kW
Rod force:	200 000 N
Weight in air:	3 200 kg
Pressure max:	2 500 bar

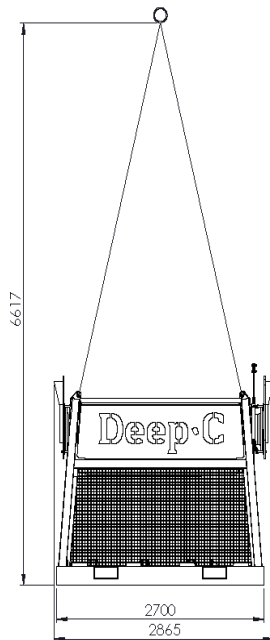




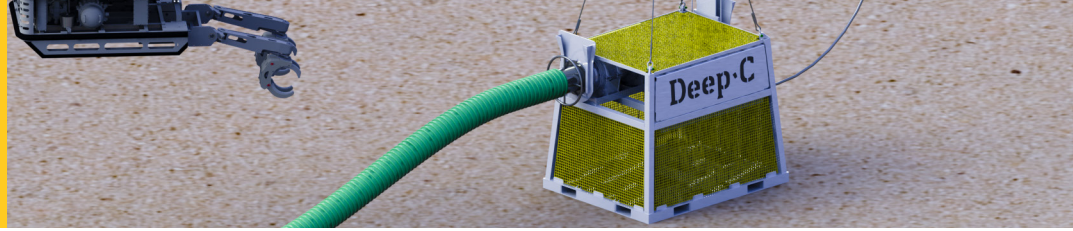
Technical Drawings

Deck layout

Rigging Arrangement

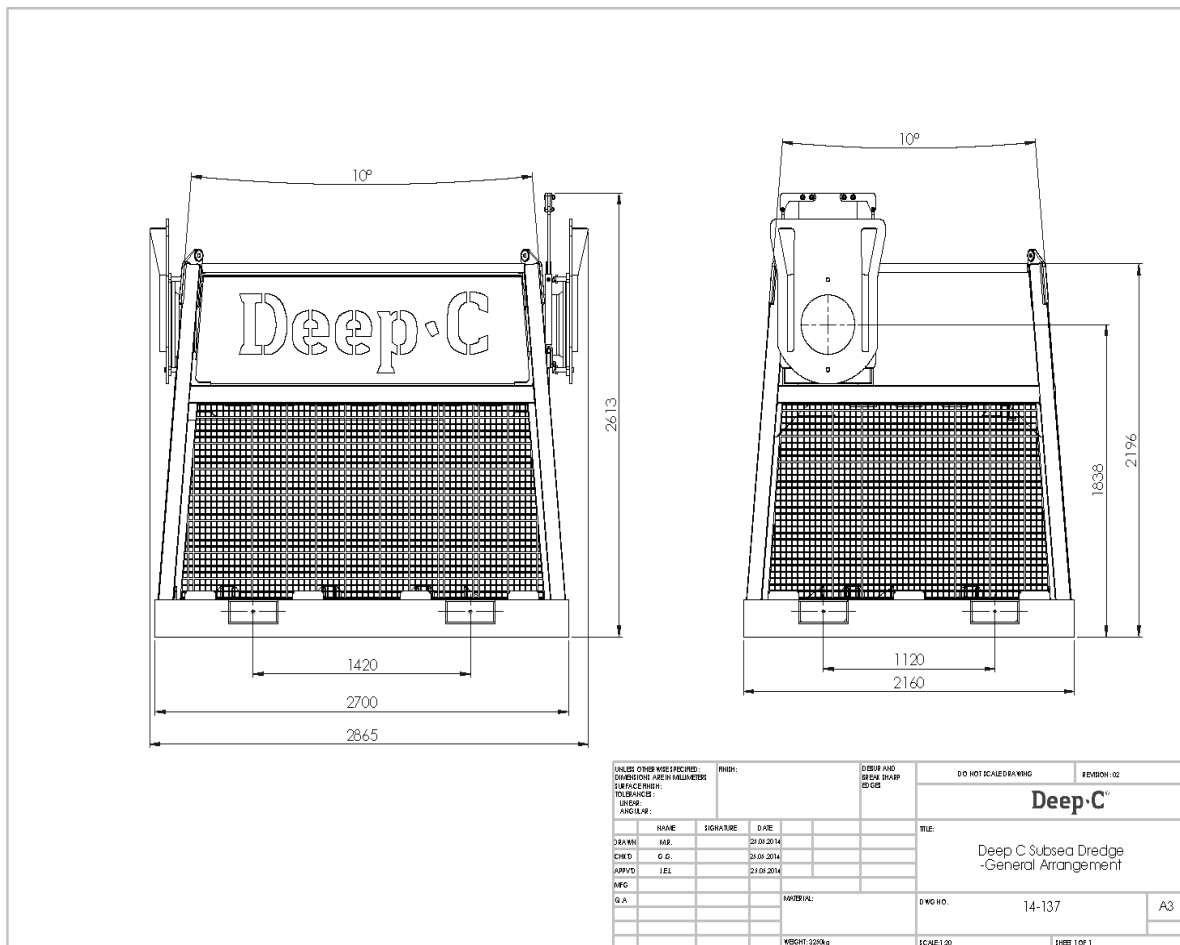


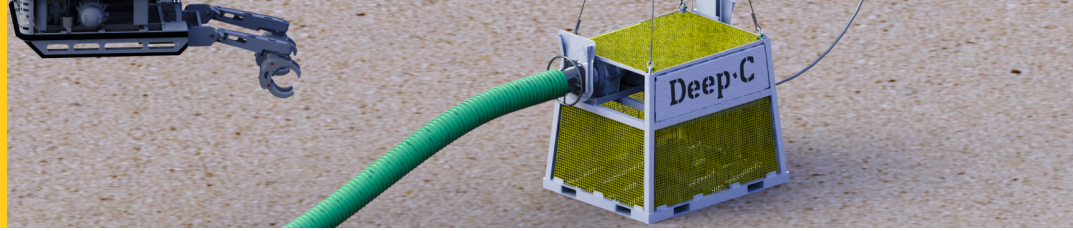
UNLESS OTHERWISE SPECIFIED: DIMENSIONS ARE IN MILLIMETERS SURFACE FINISH: TOLERANCES: UNLESS ANGULAR:				FINISH:	DESIGN AND DRAW SHEET NO.		DO NOT SCALE DRAWING	REVISION: 02
DRAWN M.B.				SIGNATURE	DATE	TITLE: Deep·C Subsea Dredge, SD-01 - Rigging Arrangement		
CHK'D G.C.				SIGNATURE	DATE	DWG NO. 14-138		
APP'D J.E.L.				SIGNATURE	DATE	A3		
APC				APPROVAL:		SCALE: 1:1		
G.A.				WEIGHT: 2200kg		SHEET 1 OF 1		



Technical Drawings

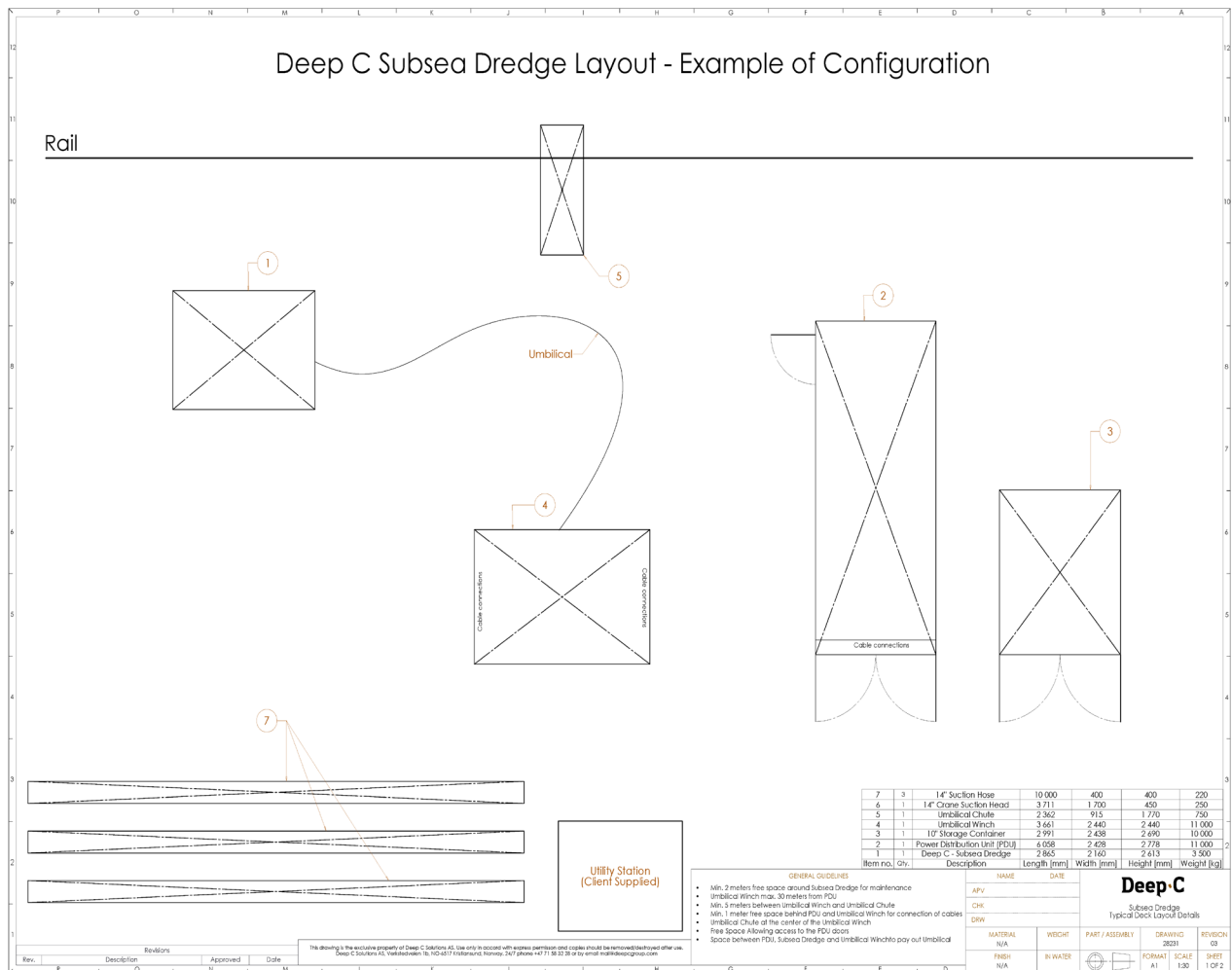
Deck layout

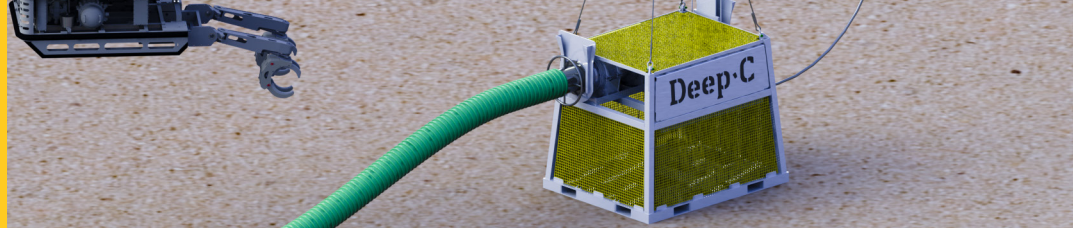




Technical Drawings

Deck layout





Technical Drawings

Deck layout

