



## Deep C Soil Plug Removal Tool

Efficient and Precise Removal with a Single Lift

The patented Deep C SPRT combines powerful jetting, suction, and washing capabilities to remove soil plugs, marine growth, and surface corrosion.

Its 360° jetting system ensures full coverage for fluidization and cleaning, leaving a flat and predictable surface for minimal grouting.

Topside-controlled operations eliminate the need for subsea rigging and ROV intervention.

Integrated winch enables accurate operation independent of vessel crane.

### Features

- Eliminate crane & ROV intervention, minimize deck space and POB
- Tailored configurations for specific pile and sediment conditions
- Effectively removes soil plugs and corrosion with 360° jetting



## Technical Specifications

The SPRT is a compact unit which is deployed into the subsea pile and has simultaneous capacity to disintegrate sediments (jetting), removal of soil plug (suction) and cleaning of inside walls (jetting).

Launched in a dedicated Launch & Recovery Frame (LRF) also functioning as a transport frame, the SPRT lands on top of the pile and allow the operation to be completed without any occupancy from the vessel crane or intervention from a WROV.

Contact [mail@deepcgroup.com](mailto:mail@deepcgroup.com) for more details.

### Dimensions

Length:	9 500 – 11 000 mm
Width:	Ø 2 250 – 3 000 mm
Height:	Ø 2 250 – 3 000 mm
Weight in air:	8 500 kg
Weight submerged:	7 000 kg

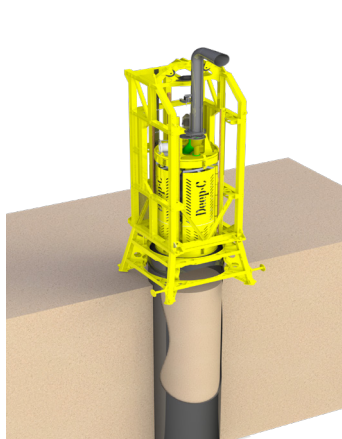
### Dimensions in Launch and Recovery Frame (LRF)

Length:	11 000 mm
Width:	4 150 mm
Height:	3 700 mm
Weight in air:	22 000 kg
Weight submerged:	17000 - 18 000 kg

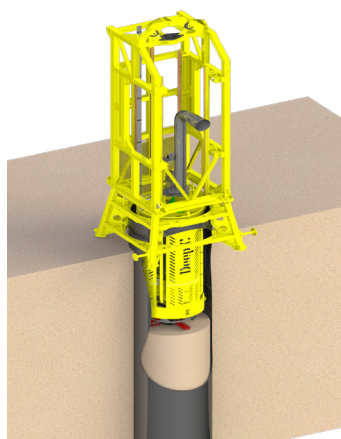
### Interface

Power supply:	400-480V 60Hz. 3 of 250 A 3 phase
Connection type:	Umbilical

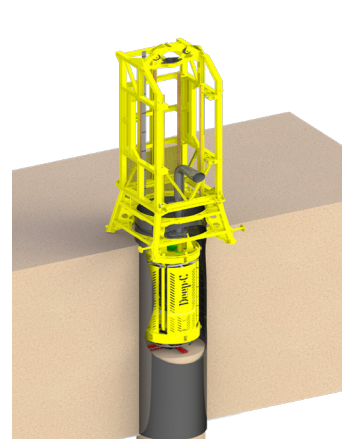
## Operational Steps



0.5 m pile depth



5 m pile depth

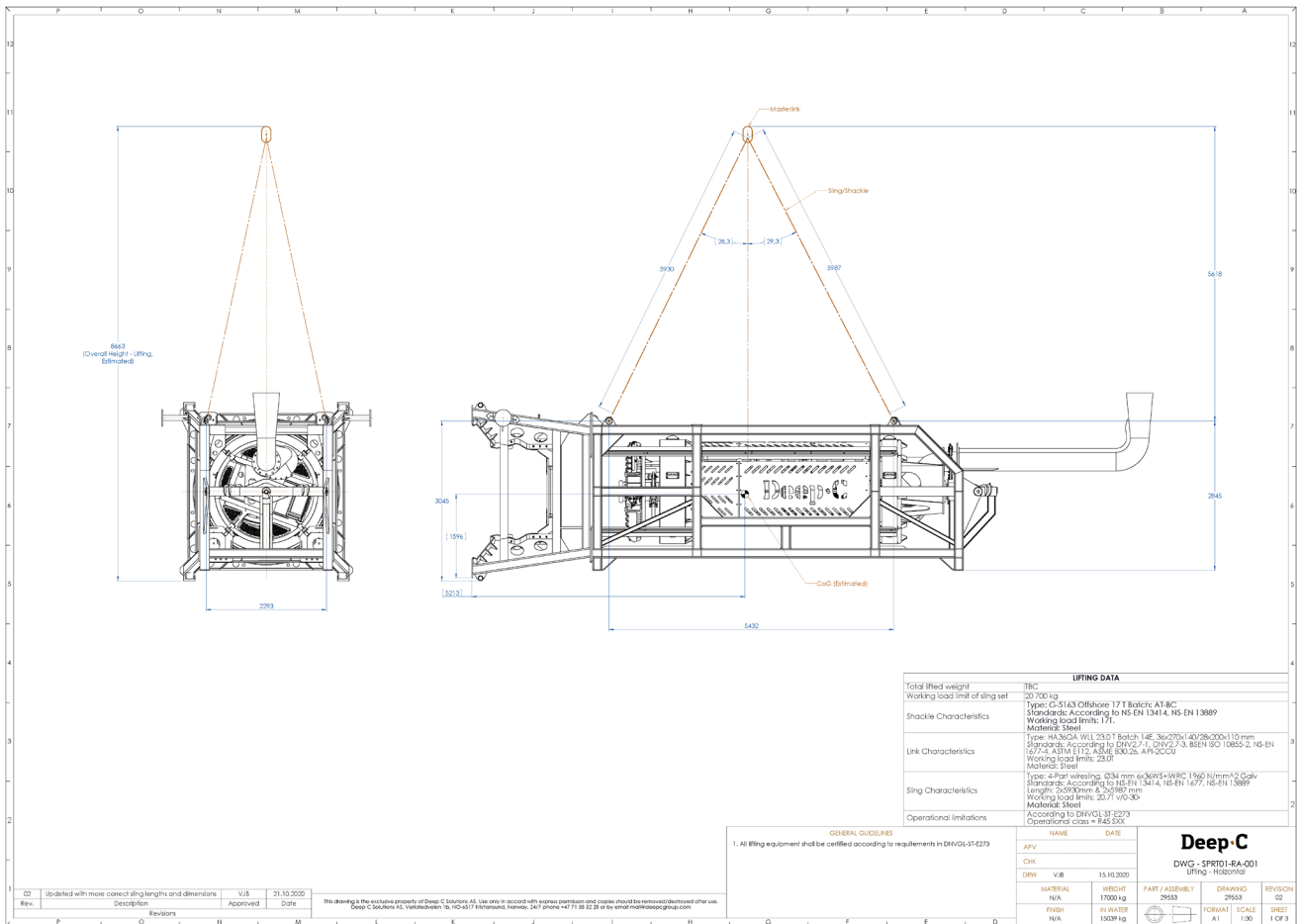


7.18 m pile depth



# Technical Drawings

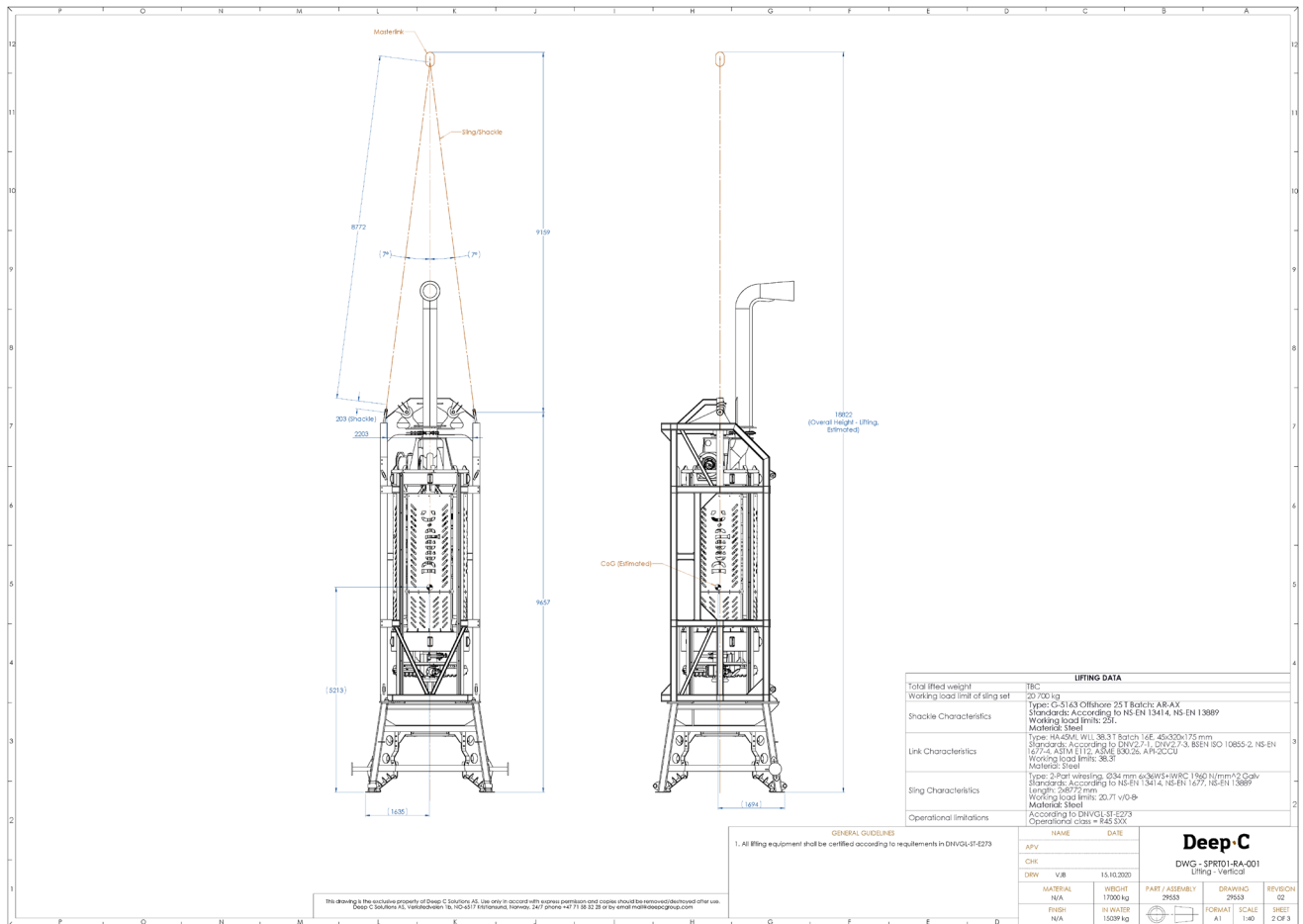
## Configurations overview





# Technical Drawings

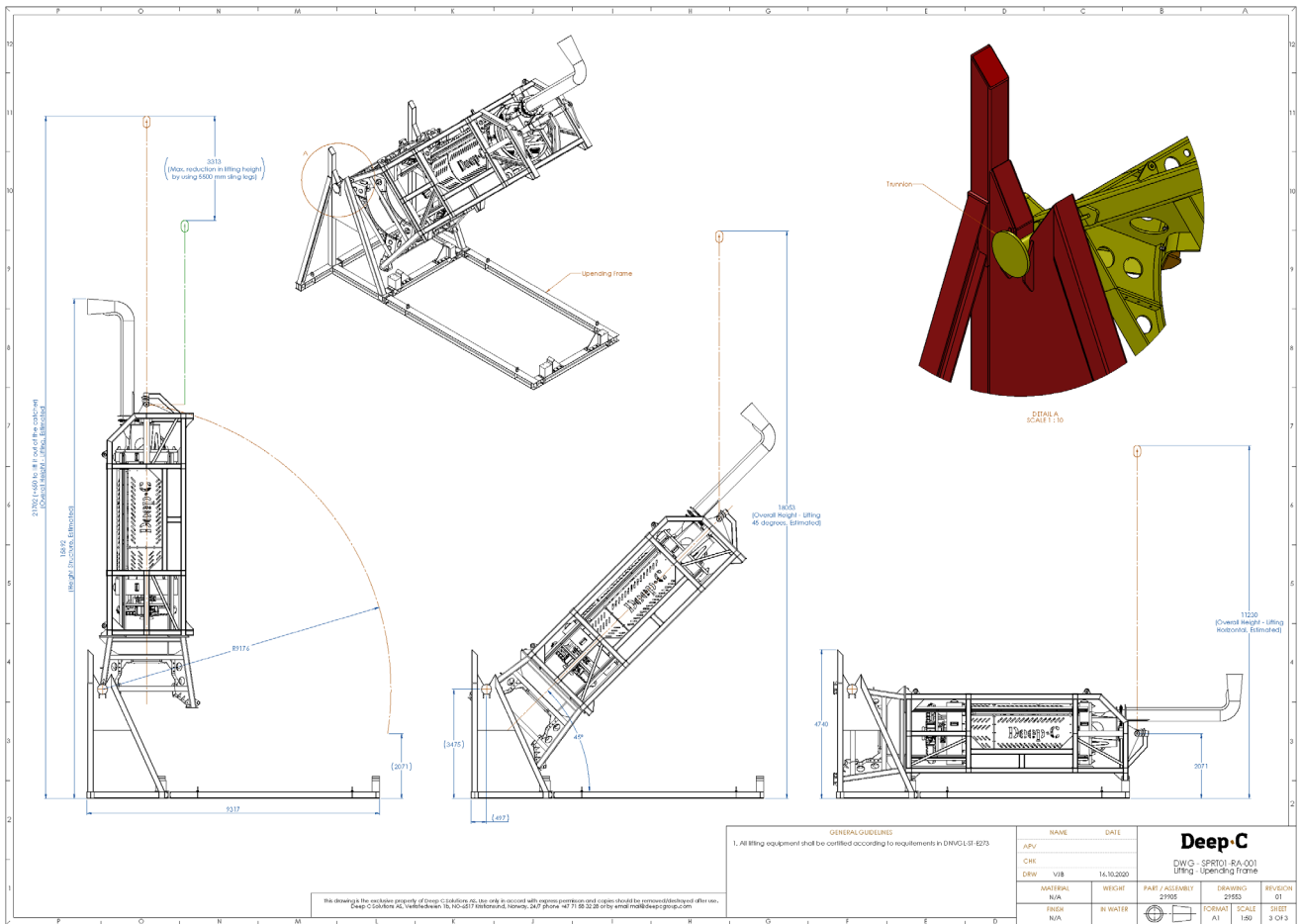
## Configurations overview





# Technical Drawings

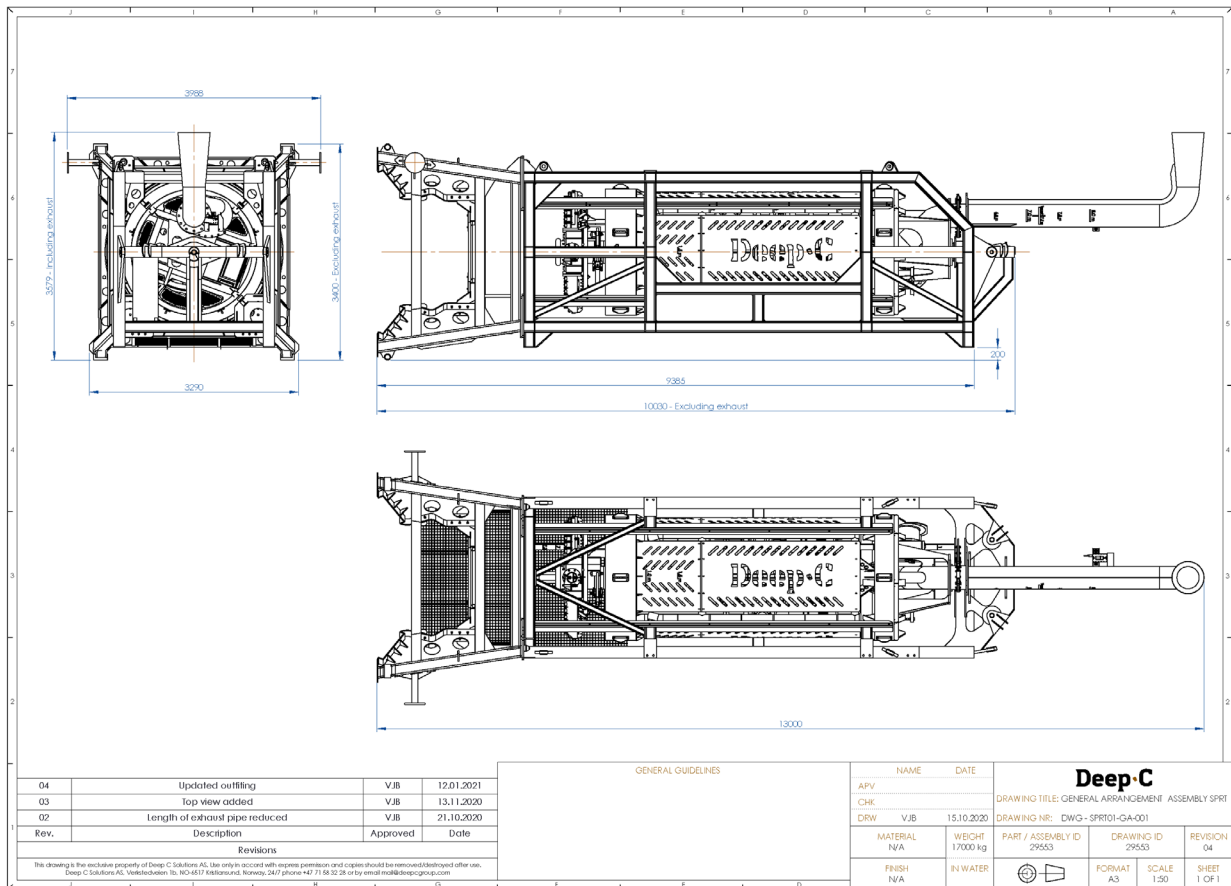
## Configurations overview





# Technical Drawings

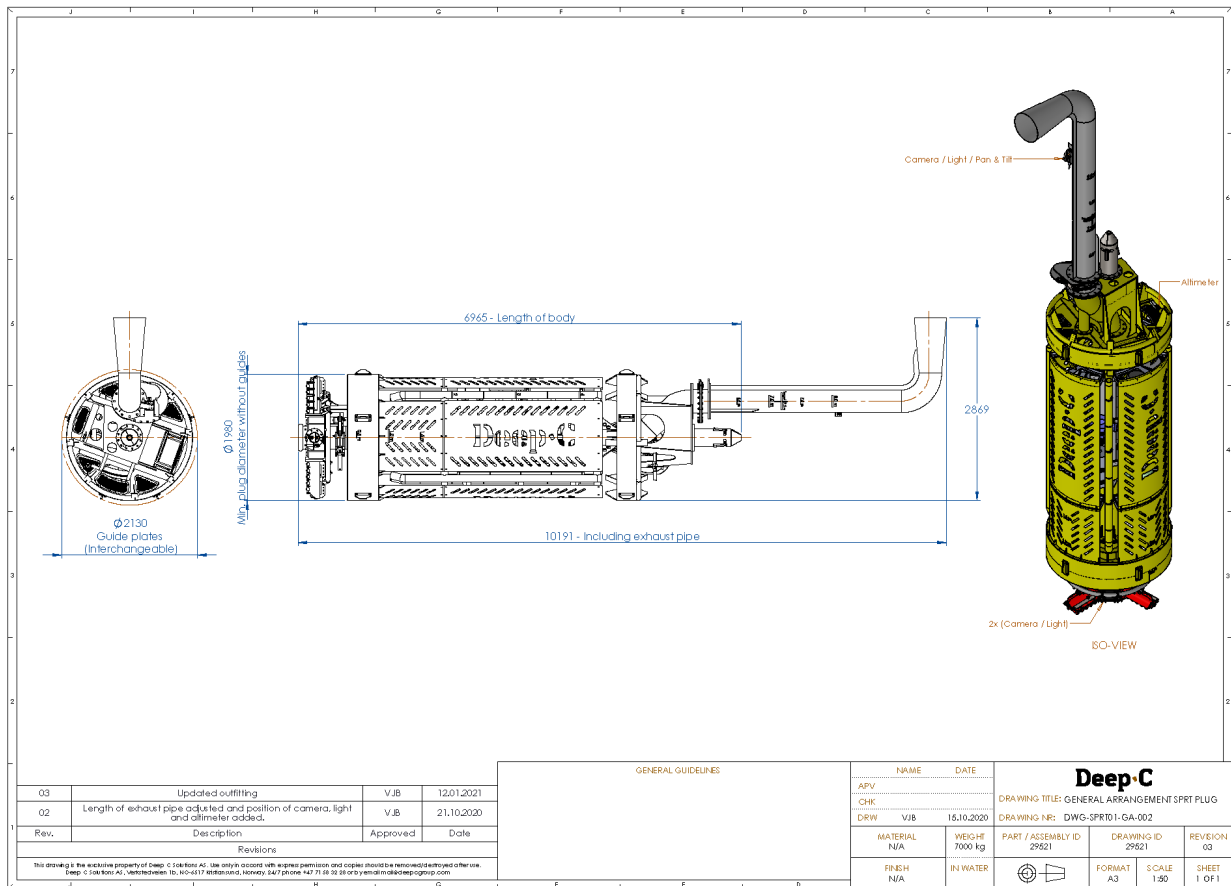
Configurations overview





# Technical Drawings

## Configurations overview





# Technical Drawings

Configurations overview

